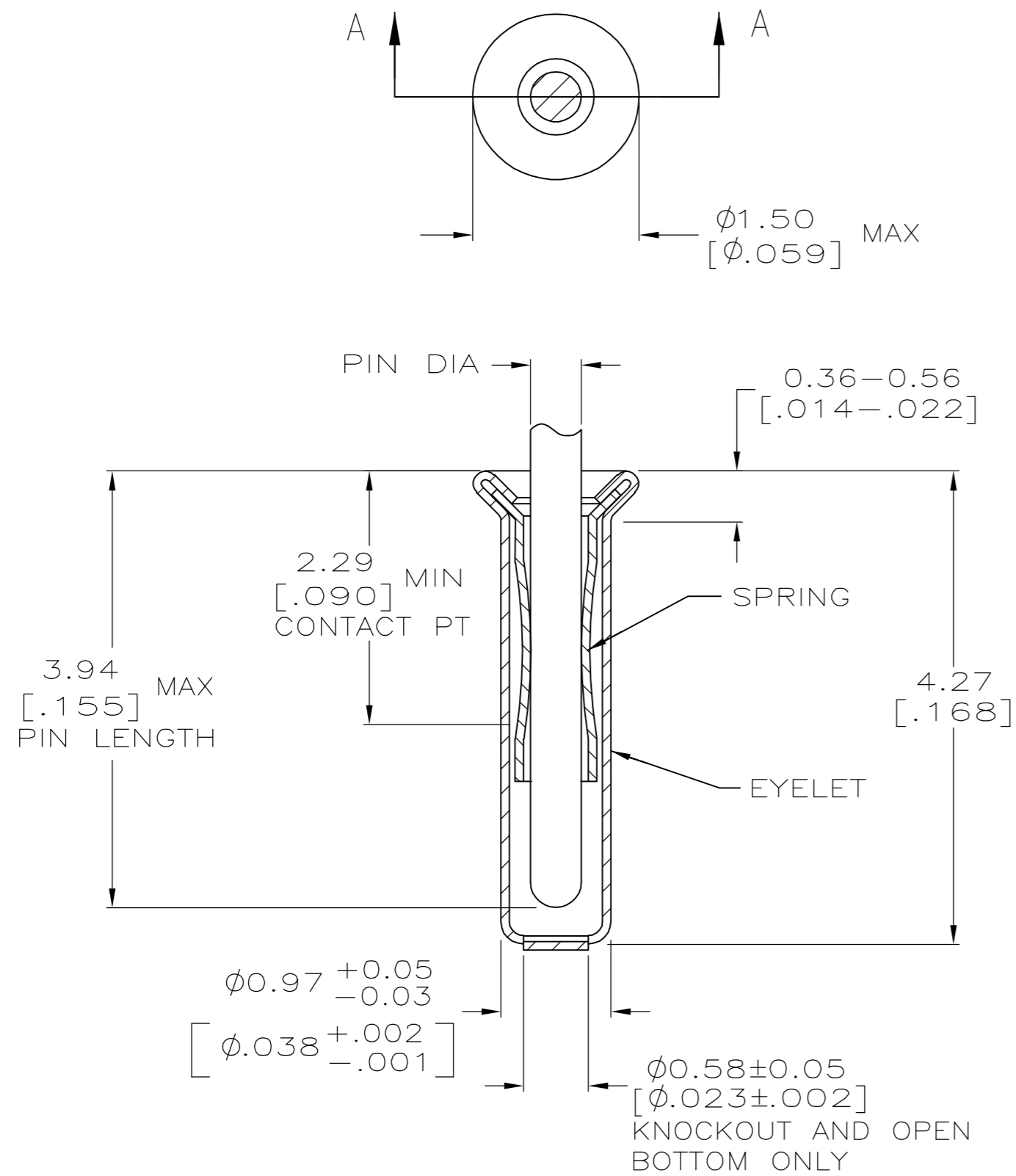


THIS DRAWING IS UNPUBLISHED. RELEASED FOR PUBLICATION  
 © COPYRIGHT BY TYCO ELECTRONICS CORPORATION. ALL RIGHTS RESERVED.

LOC	DIST	REVISIONS					
GP	00	P	LTR	DESCRIPTION	DATE	DWN	APVD
		AC1		REV PER ECO-06-018765	13APR07	DH	DB



SECTION A-A

- 1. TIN PER MIL-T-10727 OR TIN LEAD .000254 [.000100] MIN THK.
- 2. GOLD PER MIL-G-45204, TYPE II, 0.00076 [.000030] MIN THK OVER NICKEL PER QQ-N-290 0.00028 [.000011] MIN THK ON CONTACT AREA.
- 3. GOLD FLASH PER MIL-G-45204, TYPE II, 0.13µm [.000005] MIN THK. OVER NICKEL PLATE PER QQ-N-290 0.51µm-1.52µm [.000020-.000060] EXT THK.
- 4. RECOMMENDED HOLE SIZE, PLATED OR UNPLATED:  
 MACHINE INSERTION: 1.04±0.05 [.041±.002]  
 HAND INSERTION: 1.02 +0.10 / -0.00 [.040 +.004 / -.000]
- 5. APPLICATION TOOL PART NUMBER:  
 MACHINE NO. 682127-2  
 INSERTION HEAD NO. 682039-1
- 6. TO INSURE PROPER SPRING TENSION DO NOT EXCEED A 0.10 [.004] DIFFERENCE IN PIN DIA WHEN CHANGING TO A SMALLER PIN.
- 7. BOTTOM PLUG KNOCKOUT TOOL PART NUMBER 69729 WITH TIP PART NUMBER 69728.
- 8. TIN PER ASTM B 545, .000254 [.000100] MIN THK.

SUPSD BY 50935-1	CLOSED	0.33-0.51 [.013-.020]	TIN 8	TIN 8	6-50935-2
	OPEN		TIN 1	GOLD 2	50935-9
OBSOLETE OBSOLETE OBSOLETE	KNOCKOUT	0.33-0.51 [.013-.020]	GOLD 3	TIN 1	50935-8
	CLOSED		TIN 1	GOLD 2	50935-6
			GOLD 3	TIN 1	TIN 1
BOTTOM TYPE	RECOMMENDED PIN DIA 6	EYELET	SPRING		PART NO

THIS DRAWING IS A CONTROLLED DOCUMENT.		DWN	20SEP2005	tyco Electronics		Tyco Electronics Corporation Harrisburg, Pa 17105-3608	
DIMENSIONS: INCHES		CHK	R. TALLEY	NAME		MINIATURE SPRING SOCKET ASSEMBLY SERIES 1	
TOLERANCES UNLESS OTHERWISE SPECIFIED:		APVD		PRODUCT SPEC		-	
0 PLC ± -		APPLICATION SPEC		WEIGHT		-	
1 PLC ± -				SCALE		20:1	
2 PLC ± -				SHEET		1 OF 1	
3 PLC ± 0.20 [.008]				REV		AC1	
4 PLC ± -				CUSTOMER DRAWING			
ANGLES ± -				SIZE		A2	
FINISH				CAGE CODE		00779	
MATERIAL				DRAWING NO		C=50935	
BE CU				RESTRICTED TO		-	